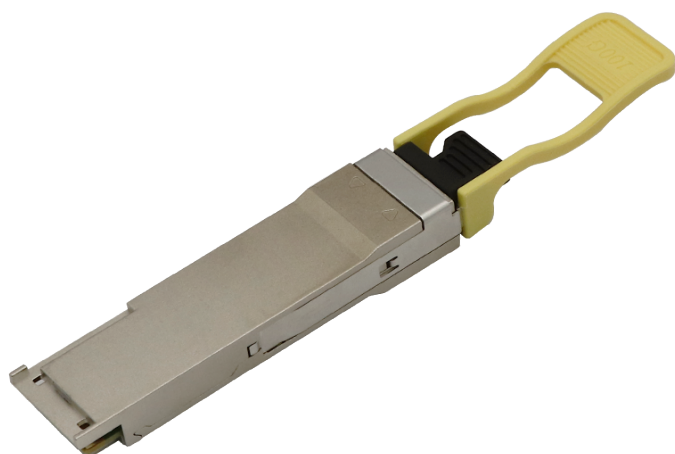


100G QSFP28 SR4



► Features

- Support 100GBASE-SR4/100G Fiber Channel application
- Compliant to SFF-8636
- Multi rate of up to 25.78125Gbps
- Transmission distance up to 100m (OM4)
- +3.3V single power supply
- Low power consumption
- Digital diagnostics functions are available via the I2C interface
- Operating case temp Commercial: 0°C to +70 °C
- RoHS compliant

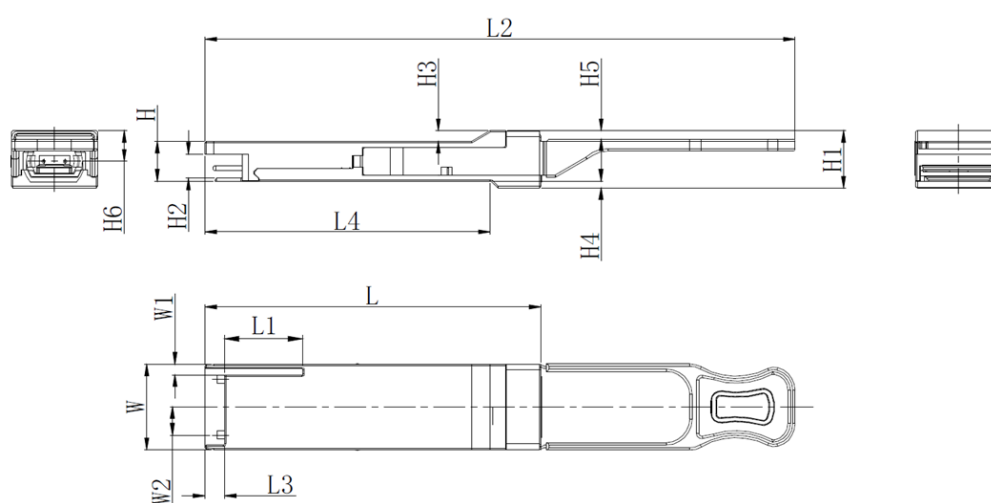
► Applications

- 100GBASE-SR4 at 25.78125Gbps per lane
- InfiniBand QDR, EDR
- Other optical links

► Absolute Maximum Ratings

Parameter	Symbol	Min.	Typical	Max.	Unit	Notes
Supply voltage	V_{CC}	-0.5	-	3.6	V	
Storage temperature	T_{STG}	-40	-	85	°C	
Operating humidity	RH_{OP}	5	-	85	%	
Receiver Damage Threshold per Lane	P_{IND}	3.4	-	-	dBm	

► Mechanical Dimensions



Unit:mm

	L	L1	L2	L3	L4	W	W1	W2	H	H1	H2	H3	H4	H5	H6
MAX	72.2	-	128	4.35	61.4	18.45	-	6.2	8.6	12.4	5.35	2.5	1.6	2.0	-
Typical	72.0	-	-	4.20	61.2	18.35	-	-	8.5	12.2	5.2	2.3	1.5	1.8	6.55
MIN	68.8	16.5	124	4.05	61.0	18.25	2.2	5.8	8.4	12.0	5.05	2.1	1.3	1.6	-